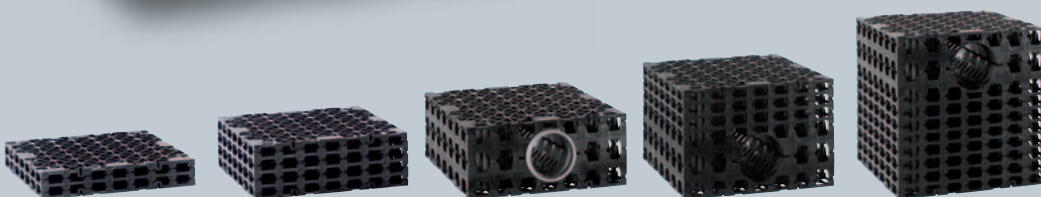
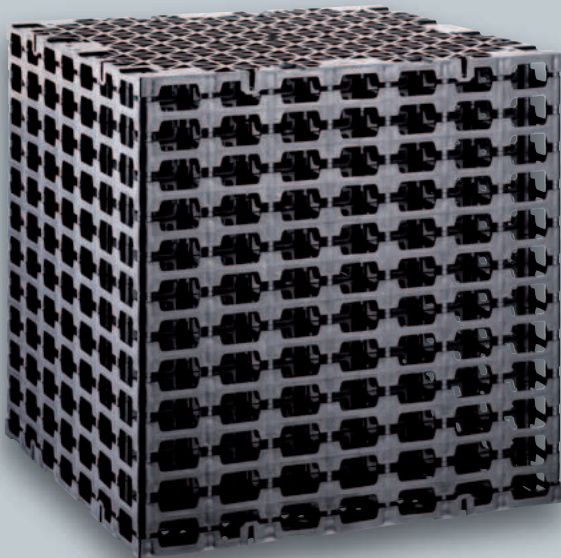


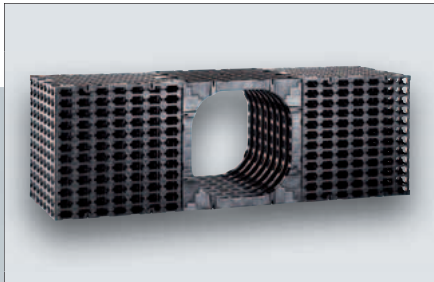
## ENREGIS/X-Box<sup>®</sup>

Certified heavy duty storm water infiltration system,  
variable in height – convincing in price and stability.



- › Extremely high stability
- › Flexible in its range of applications, height degradation in 5 cm steps
- › Optionally available with distribution/ inspection and flushing channel DN 160 or DN 500 mm
- › 100% compatible with the ENREGIS/system Controlbox<sup>®</sup>





## ENREGIS/X-Box® – An infiltration system in perfect combination

The picture shows the by the German Institute for building Technology DIBt certified, ENREGIS/X-Box®/Controlbox® system

The consequent way in the development of high performance, functionally well engineered underground infiltration and retention systems, goes on with the new ENREGIS/X-Box.

The ENREGIS/X-Box system sets new standards and has an almost unbeatable price-performance ratio. Alone or in combination with the successful ENREGIS/Controlbox range, numerous variants of this system can be customized in terms of size, geometry and functionality. A unique feature is

that the cavity elements can be made with standard heights of 10, 20, 30, 40, 50 and 60 cm and at the customer's option in height gradations of 5 cm. Due to his extremely capacity (165 columns/m<sup>2</sup> contact areas) it is suitable for use as a volume store both a greater depths and near the surface in large-area infiltration. This gives the person responsible for the planning the maximum degree of design flexibility, making this system ideally suited for use with high groundwater tables. Load-optimized coverings and cost savings due to the reduction in the amount of excavation required make this system even more economical. Whether you use it as a rainwater infiltration system, a film-coated rainwater retention plant or as a storage container, the ENREGIS/X-Box offers high functionality and extremely high load capacity at comparatively low investment costs. And this applies especially in comparison with other, classic systems (pipe/gravel).




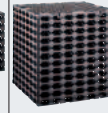
vertical), extremely durable hollow bodies of Polypropylene (PP), free storage capacity (cavity share ca. 95%), three-dimensional flow, pipe connections from DN 100 to DN 500 on every side available for all standard pipe materials. ENREGIS/X-Box 100% compatible with the ENREGIS/Controlbox programme, can be connected, extended or combined on all sides. In combination with the ENREGIS/System Controlbox, results a continuous inspection channel > DN 500, suitable for the use of camera/flushing dollies for pipes from DN 100 upward. All inflows, outflows and transition points have been optimized for use with such systems. The inspection channel provides a perfect access to the most important lateral/contact surface and/or the geotextile areas.

### Quality standards

- German Engineering & Production
- Purity tests of the used materials
- Continuous monitoring of the end product from current production
- Regularly pressure and stability tests

The sophisticated static of the system leads to a product, which correspond even to the highest requirements.

Further futures of the ENREGIS/system: system - optimized connection accessories (horizontal/

ENREGIS/X-Box® - Dimensions/volumes				
	Typ 20	Typ 30	Typ 40	Typ 60
Examples*				
Width	600 mm	600 mm	600 mm	600 mm
Height	200 mm	300 mm	400 mm	600 mm
Depth	600 mm	600 mm	600 mm	600 mm
Weight	3,6 kg	5,4 kg	7,2 kg	10,8 kg
Volume	72 L gross	108 L gross	144 L gross	216 L gross

[Elements in greater or other heights available on request]

### Data and Facts

**Product name**  
ENREGIS/X-Box®

**Technical data**  
Dimensions (W x H x D mm) see table  
Gross volume (litres) see table  
Weight per unit (Kg) see table  
Weight per m<sup>2</sup> (Kg) ca. 50  
Storage capacity (%) 95 (corresponds to 950 l excavation)

**Material**  
Polypropylene (PP)

**Load/minimum Cover thickness \* (m)**  
Walkable min. 0,20  
Car min. 0,60  
SLW 30 min. 0,80  
SLW 60 min. 0,80

**Max. cover thickness \* (m)**  
3,00, greater cover possible after technical clarification dep. on figuration.

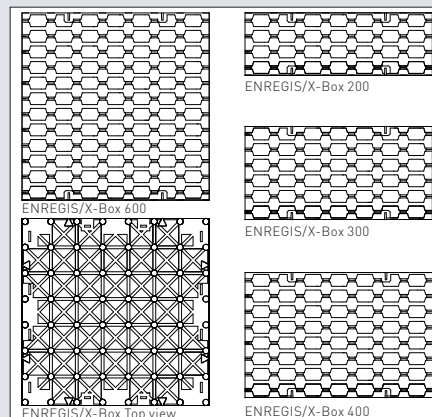
**Number of layers \* (pieces)**  
Max. overall height of the installed system 4,00 \*  
up to 4,50 m\*, greater depths on request

**Max. installation depth \***  
optionally 110, 160, 200, 315, 400, 500

**Connections (DN)**  
optionally 110, 160, 200, 315, 400, 500

**Certificate/Testing**  
DIBt approval number: Z-42.1-509,  
RAL Gütezeichen Regenwassersysteme RAL-GZ 994/11,  
Pressure/stability testing, optionally with verifiable project statics

### Dimensions



### Advantages at a glance

- Extreme capacity
- Long term bearing capacity ≥ 50 years
- Variable in installation, besides numerous standard heights, also available in 5 cm gradations
- Extremely high storage capacity (>95%)
- Fully compatible with the ENREGIS/system Controlbox
- Optionally with distribution/inspection and flushing channel in the sizes DN 180 up to DN 500 mm, for an optimal access.
- DIBt approval number: Z-42.1-509
- German Engineering & Production